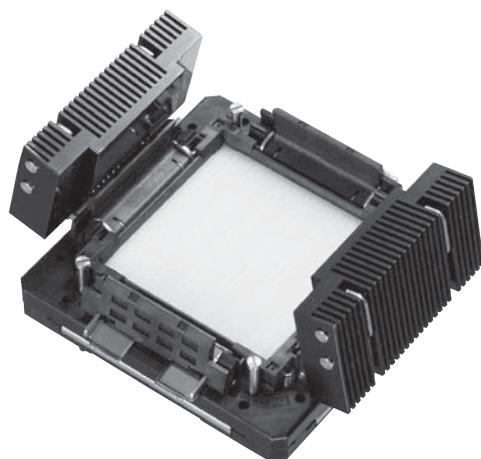


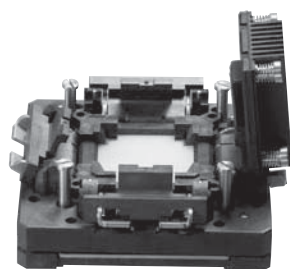
# LGA/BGA

## LAND/BALL GRID ARRAY

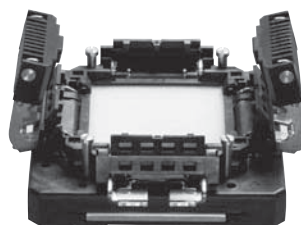
# Versatile Socket



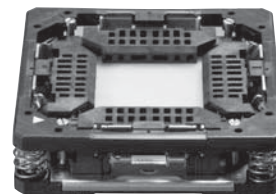
※RoHS compliant



SFF

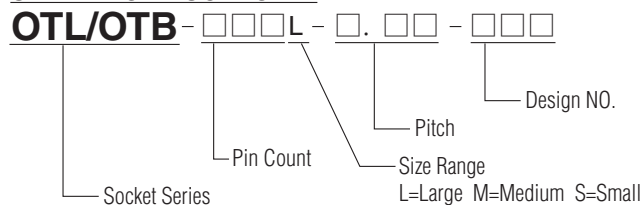


MFF



LFF

### ORDERING PROCEDURE



Specification / 仕様	
Contact resistance (Initial) 接触抵抗 (初期値)	80mΩ (At 10 mA) INITIAL
Maximum voltage 耐電圧	AC700V RMS (for 1 minute)
Insulation resistance 絶縁抵抗	1,000 MΩ or higher (At DC 500V)
Rated current 許容電流値	1.0A
Operating temperature range 仕様温度	-65°C ~ +150°C
Terminal strength against pulling 端子抜け強度	0.5Kg (1 min)
Insertion 機械寿命	Min 10,000 times (mechanical)
MATERIAL / 材質	
Body 本体	PEI, PES
Contact コンタクトピン	Low BeCu

## APPLICABLE IC DIMENSIONS & SOCKET DIMENSIONS

- Package Type: LGA/BGA
- Enplas' concept accommodates various Pitch & Package Sizes.

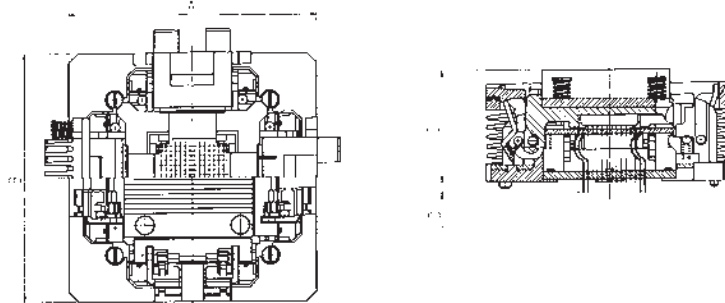
(Unit:mm)

Size Range	Socket SIZE	Pkg. Size	LGA	BGA
			Pitch	Pitch
Large	81.0×81.0	37.5 – 50.0	0.6~1.27	0.6~1.27
Medium	64.0×64.0	26.0 – 35.0	0.6~1.27	0.6~1.27
Small	52.0×52.0	10.0 – 25.0	0.6~1.27	0.6~1.27

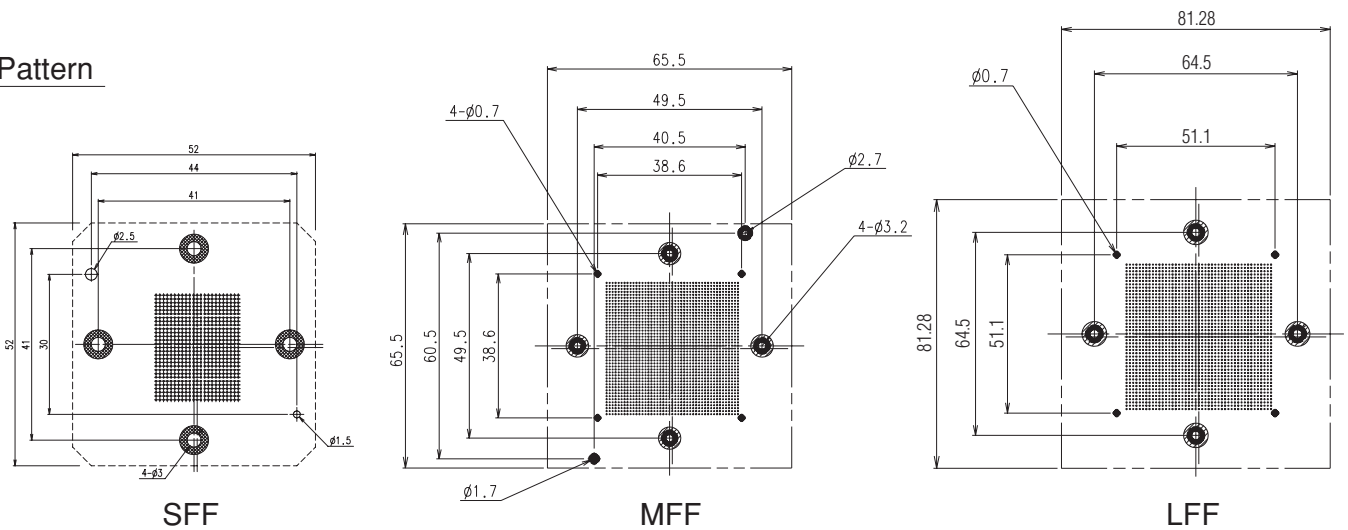
- Flexible Pin Pitch is available between 0.6-1.27mm for LGA.
- Flexible Pin Pitch is available between 0.6-1.27mm for BGA.
- Customised Heat Sink for High Thermal Performance
- Socket Without Heat Sink version also available.
- LGA 0.6mm~1.27mmのマルチピッチ対応
- BGA 0.6mm~1.27mmのマルチピッチ対応
- 熱解析技術に基づいた最適なヒートシンク設計
- ヒートシンク無しにも対応

# Applicable IC/LGA · BGA

## OPEN TOP VERSATILE SOCKET



PCB Pattern



### OTL/OTB versatile socket for small size (10-25mm PKG)

Unit: mm

PART NO.	APPLICABLE IC DIMENSIONS (REF.)			OUTSIDE DIMENSIONS (REF.)				REMARKS
	BODY SIZE	GRID	PITCH	A	B	C	D	
OTL/OTB-1.0mm Pitch Series	15×15	14×14	1.0	52	52	24	2.29	
OTL/OTB-1.0mm Pitch Series	17×17	16×16	1.0					
OTL-0.8mm Pitch Series	23×23	26×26	0.8					

### OTL/OTB versatile socket for medium size (26.0-35.0mm PKG)

Unit: mm

PART NO.	APPLICABLE IC DIMENSIONS (REF.)			OUTSIDE DIMENSIONS (REF.)				REMARKS
	BODY SIZE	GRID	PITCH	A	B	C	D	
OTL/OTB-1.0mm Pitch Series	33×33	32×32	1.0	64	64	24	2.29	
OTL -0.8mm Pitch Series	33×33	41×41	0.8					

### OTL/OTB versatile socket for large size (37.5-50.0mm PKG)

Unit: mm

PART NO.	APPLICABLE IC DIMENSIONS (REF.)			OUTSIDE DIMENSIONS (REF.)				REMARKS
	BODY SIZE	GRID	PITCH	A	B	C	D	
OTB-0.8mm Pitch Series	37.5×37.5	46×46	0.8	76.2	76.2	24	2.29	
OTL/OTB-1.0mm Pitch Series	37.5×37.5	36×36	1.0					
OTL/OTB-1.0mm Pitch Series	40×40	38×38	1.0					
OTL/OTB-1.0mm Pitch Series	42.5×42.5	41×41	1.0					
OTL/OTB-1.27mm Pitch Series	37.5×37.5	29×29	1.27					